

OSU ASCE
STUDENT CHAPTER
100-YEAR
ANNIVERSARY
CELEBRATION



HOSTS

DARREN HIPPENSTIEL

2002-2003 OSU CHAPTER PRESIDENT
ASCE REGION 8 GOVERNOR

AUTUMN DE LA CRUZ

2021-2022 OSU CHAPTER PRESIDENT

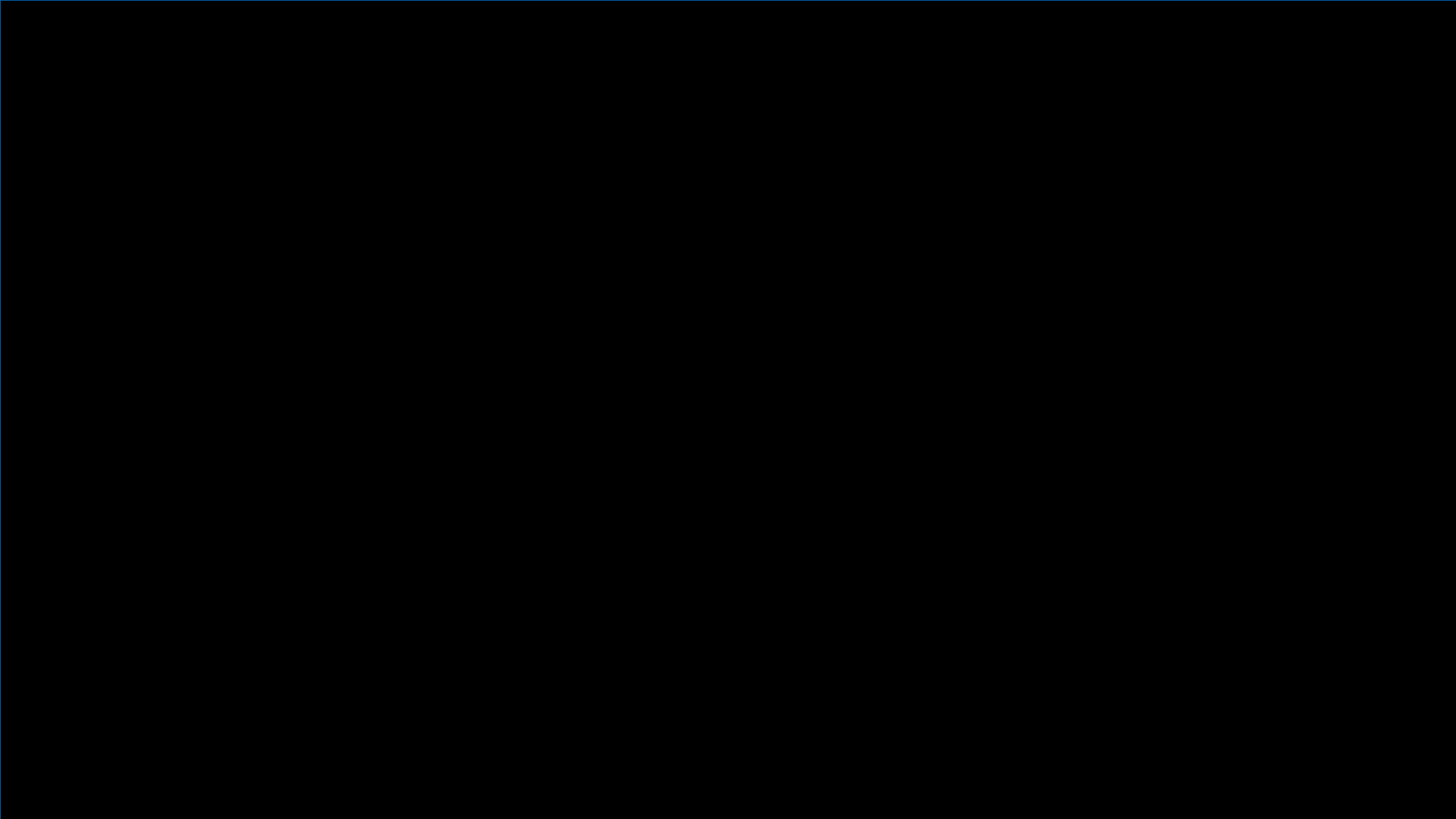


WELCOME



SCOTT ASHFORD

OSU DEAN OF ENGINEERING



HISTORY



CHRIS BELL

1988-1997 FACULTY ADVISOR



TOM MILLER

1997-2022 FACULTY ADVISOR

OSU ASCE MISSION

The objectives of the organization are:

- The advancement of the art and science of engineering,
- The professional improvement of its members,
- The encouragement of civil responsibility of its members
- The encouragement of professional and social interaction between students of civil engineering and practicing engineers.





OSU ASCE STUDENT CHAPTER
PRESIDENTS

CHAPTER PRESIDENTS



DAISY MULLIGAN

2022-2023



AUTUMN DE LA CRUZ

2021-2022



MILA GASTON

2020-2021

CHAPTER PRESIDENTS



MAURA PATTERSON

2019-2020



MADISON HALL

2018-2019



NICK HOSSLEY

2017-2018

CHAPTER PRESIDENTS



CODY BEAIRSTO

2016-2017



ANDY TRUONG

2015-2016



JAMES DESMOND

2014-2015

CHAPTER PRESIDENTS



JACOB WALTER

2013-2014



ELIZABETH HESS

2012-2013



DEANNA KUHLMAN

2011-2012

CHAPTER PRESIDENTS



SRI BENSON

2010-2011



KATE BRADBURY

2009-2010



DEREK MANWILL

2008-2009

CHAPTER PRESIDENTS



KYLE TANIGUCHI

2007-2008



JENNA DINSMORE

2006-2007



EVAN KRISTOF

2005-2006

CHAPTER PRESIDENTS



CARL KOESTER

2004-2005



KATIE RITENOUR

2003-2004



DARREN HIPPENSTIEL

2002-2003

CHAPTER PRESIDENTS



ERIC LINDSTROM

2001-2002



STACY FROST

2000-2001



RYAN DOW

1999-2000

CHAPTER PRESIDENTS



JASON HESS

1998-1999

DARCY BOYD

1997-1998



DAN HERFORD

1996-1997

CHAPTER PRESIDENTS



JOE MYERS

1995-1996



KURT KRUEGER

1994-1995



STEVE TRAUTWEIN

1993-1994

CHAPTER PRESIDENTS

Marcy Brownell, 1992-93

Bryan Brock, 1991-92

Brad Zubeck, 1990-91

Jaime Murray, 1989-90

John Deskins, 1988-89

John Moran, 1987-88

Peggy Cole, 1986-87

Cindy Thrush, 1985-86

Tracy Cork, 1984-85

Jay Nance, 1983-84

Ray Peters, 1982-83

Mike Robbins, 1981-82

Sue Heeszal, 1980-81

Rick Wessell, 1979-80

Dave Nicoli, 1978-79



CHAPTER PRESIDENTS

Randy McCourt, 1977-78
Steve Waring, 1976-77
Bill Lawson, 1975-76
Jeff Bradley, 1974-75
Al Shewey, 1973-74
James Sly, 1972-73
Larry Brunkow, 1971-72
Gary Werner, 1970-71
Dick Harbert, 1969-70
Robert Hanson, 1968-69

Sheridan Atkinson, 1967-68
Robert Adams, 1966-67
Charles Way, 1965-66
Lloyd Cox, 1964-65
Roy Repak, 1963-64
Ken Feigner, 1962-63
Tony Birch, 1961-62
Tom Edick, 1960-61
Dick Purdy, 1959-60
Lynn Gann, 1958-59

Gerry Whitney, 1957-58
Hal Pritchett, 1956-57
Ken Levien, 1955-56
Marvin Stephenson, 1954-55
Robert Wendlandt, 1953-54
Darrell Halligan, 1952-53
Donald Davis, 1951-52
Bob Young, 1950-51



CHAPTER PRESIDENTS

David Koester, 1949-50
John Boyle, 1948-49
Larry Bernardi, 1947-48
Carl Timmons, 1946-47
Charles H. Wagner, 1945-46
Bob Ewing, 1942-43
William J. Smith, 1941-42
Bill Alexander, 1940-41
Jerry Cavanaugh, 1939-40
Kenneth Lange, 1938-39
Ed Gray, 1937-38
Charles Ruzek, 1936-37
Charles Bayles, 1935-36
Irvine Cooper, 1934-35

Arnolds Greenlaw, 1933-34
Adolph Bernscheidt, 1932-33
Warren Gilbert, 1931-32
Ardery Rankin, 1930-31
Sidney Klahn, 1929-30
Scott A. McClanathan, 1928-29
Arthur L. Ewell, 1927-28
Victor L. Goodnight, 1926-27
Buell Wilcox, 1925-26
Neil Olson, 1924-25
Dick Slater, 1921-22
A. Murhard/Tom Delzell, 1920-21
I.A. DeFrance/Robert McClanathan, 1919-20
Raymond Archibald/Ricketts, 1918-19

Ben Rush/L. Jetley, 1917-18
Z.A. Lansdale/J.W. Bones, 1916-17
R.M. Conner/Z.A. Lansdale, 1915-16
H.W. Clough/R.M. Conner, 1914-15
Scoville/Soken, 1913-14
W.G. Carson/MacNamee, 1912-13
Brown/P.R. Watson, 1911-12
Alvin E. Finlay, 1910-11
John C. Strebin, 1909-10





OSU ASCE STRUCTURAL ENGINEERING INSTITUTE

CHAIRS

OSU SEI CHAPTER CHAIRS



CODY BEAIRSTO

2017-2019



DAVID RIVERA

2019-2020



RAWAN AL NAABI

2020-2022



**OSU ASCE STUDENT CHAPTER
FACULTY ADVISORS**

FACULTY ADVISORS



TOM MILLER

1997-2022



CHRIS BELL

1988-1997



DAVE BELLA

1985-1988

FACULTY ADVISORS



JOE TEDESCO

1983-1985



TED VINSON

1980-1983



CHUCK SOLLITT

1977-1980

FACULTY ADVISORS



PETE KLINGEMAN

1974-1977

W.H. WHITE

1972-1974



LEE SCHROEDER

1969-1972

FACULTY ADVISORS



HAL PRITCHETT

1965-1969



BOB SCHULTZ

1962-1965

FACULTY ADVISORS

Dr. Schoemaker, 1961-62
Glenn Holcomb, 1958-61
Tom McClellan, 1956-58
Glenn Holcomb, 1955-56
Leslie Clayton, 1952-55
Orville Kofoid, 1949-52
Martin Coopey, 1948-49
Charles A. Mockmore, 1947-48



TOM MCCLELLAN

1956-1958

KEN ARCHIBALD - PRACTITIONER ADVISOR FOR HALF CENTURY 1973-2022

OSU BS Civil Engineering,
1958

ODOT Bridge Design and Road Design Sections, 1960-1990
President, ASCE Willamette Branch, 1974-75
ASCE Region 8 Practitioner Advisor of the Year, 2019, 2010, 2014
ASCE Oregon Section Government Engineer of the Year, 2016
ASCE National Practitioner Advisor of the Year, 2016



KEN ARCHIBALD PRACTITIONER ADVISOR FOR HALF CENTURY 1973-2022



Ken and Past OSU ASCE Chapter Presidents



KEN ARCHIBALD AWARD ASCE OFFICER OF THE YEAR

2022 – Daisy Mulligan

2021 - Mila Gaston & Kyong Rim Yi

2020 - Rawan Al Naabi

2019 - Madison Hall

2018 - Nicholas Hossley

2017 - Wyatt Morris

2016 - Nathan Jones

2015 - Andy Truong

2014 - Austin Williams

2013 - Elizabeth Hess

2012 - Deanna Amneus

2011 - Sri Benson

2010 – Kate Bradbury

2009 - Derek Manwill

2008 - Kyle Taniguchi

2007 - Melanie Kaneta

2006 - Evan Kristof

2005 - Jennifer LaClef

2004 - Katie Walker

2003 - Darren Hippenstiel

2002 - Eric Lindstrom

2001 - Nathan Hardy

2000 - Ryan Dow

1999 - Mary Kate Koonce



PRACTITIONER ADVISORS



JOSH GOODALL

2017-2022



DUSTY ANDREWS

2001-2022



TODD WHITAKER

1989-2016

PRACTITIONER ADVISORS

Rollie Baxter, 1982-86, 1991-92

Gerry Flatz, 1988-89

Randy Boyd, 1987-88

Jerry Minor, 1986-87

Steve Waring, 1978-81

Pat Klampe, 1973-78

John Ramage, 1971-73

Bruce Frank, 1968-71

Alvin Gaylord, 1969-70

Marvin Runyam, 1965-69

Robert Wright, 1966-68

Don Benson, 1959-65

Bob Pailthorp, 1964-65

Bob Adams, 1954-64

Gordon Burt, 1956-58

Guy Taylor, 1954-56

Ivan Merchant, 1950-54

Glen Paxson, 1947-50



The ASCE logo features the letters 'ASCE' in a bold, white, sans-serif font. The letter 'A' is stylized with three horizontal white lines passing through its left side, creating a sense of motion or a bridge structure.

ASCE

OSU ALUMNI/FACULTY

ASCE LEADERS AS PROFESSIONALS

ASCE NATIONAL PRESIDENT - 1994

OSU BS in CE, 1953

Chairman CH2M-Hill

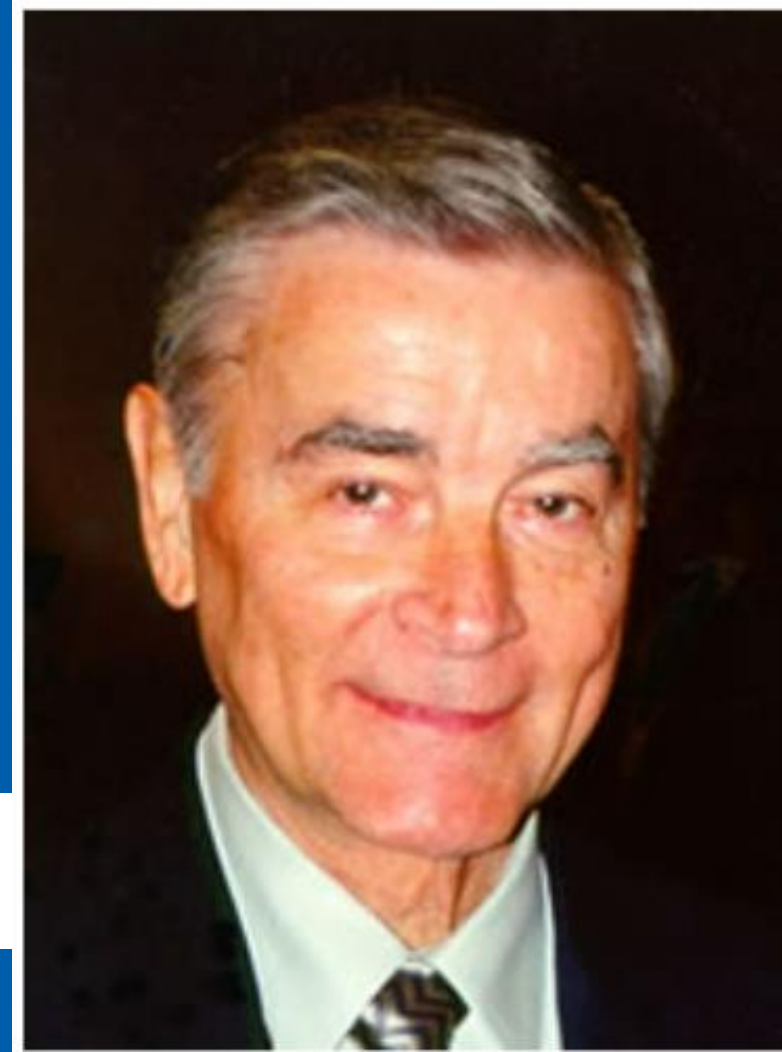
National Academy of Engineering, 1993

OSU Engineering Hall of Fame, 1998

OSU Honorary Doctorate of Engineering, 2003



James Poirot



ASCE NATIONAL PRESIDENT - 2013

OSU BS in CE, 1975

ASCE Student Member 1973-75

ASCE District 12 Chair 1989-90

ASCE District 12 National Director 2004-2006



Greg DiLoreto





ASCE NATIONAL PRESIDENT - 1961

Glenn Holcomb

Masters in Education from OSU, 1931
OSU Structural Engineering Professor: 1920s – 1960s
OSU CE Department Head
OSU ASCE Faculty Advisor, 1955-56, 1958-61
ASCE Oregon Section President, 1942-43

ASCE REGION 8 GOVERNORS (AZ,AK,HI,ID,MT,NV,OR,UT,WA,Western Canada)



DARREN HIPPENSTIEL

2013-2016, 2018-2020

STACY FROST

2008 - 2011



ASCE

CURRENT OREGON SECTION

PRESIDENT

JAMESTAUN KRAUPP

OSU BS Civil Engineering, 2014

Oregon Younger Member Forum President
2020-21

ASCE



OREGON SECTION PRESIDENTS



JOSH GOODALL

2020-2021



ALLISON PYRCH

2017-2018



MELISSA ROBELO MONCADA

2013-2014

OREGON SECTION PRESIDENTS



FRANK SHERKOW

2011-2012



JAVIER MONCADA

2010-2011



GENE TUPPER

2009-2010

OREGON SECTION PRESIDENTS



DARREN HIPPENSTIEL

2008-2009



ALEX LOCKARD

2007-2008



STACY FROST

2006-2007

OREGON SECTION PRESIDENTS



RON POLVI

2004-2005



KURT KRUEGER

2003-2004



PETE KLINGEMAN

1994-1995

OREGON SECTION PRESIDENTS



STAN KELSAY

1990-1991



MARK BORQUIST

1989-1990



JORY ABRAMS

1988-1989



GREG DILORETO

1986-1987

OREGON SECTION PRESIDENTS



ARLAN RIPPE

1982-1983



LEE SCHROEDER

1978-1979



GORDON W. BEECROFT

1976-1977



HAL PRITCHETT

1972-1973

OREGON SECTION PRESIDENTS



BOB ADAMS

1966-1967

Marvin W. Runyam, 1960-61

John T. Merrifield, 1959-60

G.S. Paxson, 1947-48

Glenn Holcomb, 1942-43

R.B. Wright, 1938-39

C.A. Mockmore, 1937-38



WILLAMETTE VALLEY BRANCH PRESIDENTS

Tom Lauer, 2000-2001

Paul Eckley, 1989

Pete Klingeman, 1988

Jerry Minor, 1985-1986

Rolland Baxter, 1982-1983

Pat Klampe, 1980

John Peterson, 1977

Ken Archibald, 1975

James Brown, 1974

Charles Youngman, 1973

Gordon Beecroft, 1972



CAPITAL BRANCH PRESIDENTS



MAKENZIE ELLETT

2021-2022



MIKAL MITCHELL

2018-2019



JOSH GOODALL

2013-2014

CAPITAL BRANCH PRESIDENTS



JUSTIN MODERIE

2009-2010



KEN ROLEY

2006-2008

WILLAMETTE VALLEY YOUNGER MEMBER GROUP PRESIDENTS



ANDREA MATHER

2021-2022



MAKENZIE ELLETT

2020-2021

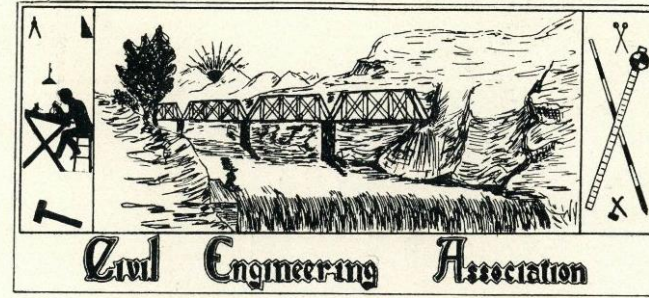


**OSU ASCE STUDENT CHAPTER
HISTORY**

1909 - 2022

OREGON AGRICULTURAL COLLEGE CIVIL ENGINEERING ASSOCIATION

ESTABLISHED 1909



THROUGH the earnest endeavors of C. T. Parker, W. W. Gardner, R. I. Thompson and P. A. Lockwood, a society was organized during the early part of this school year. This organization is known as the O. A. C. Civil Engineering Association.

The money received from dues and initiation fees is expended for such current literature as touches and discusses all the practical phases of our chosen profession. On the tables in the society room are many technical magazines containing much interesting and valuable information. The room is open at all times to the members of the association who wish to make the most of a few spare hours.

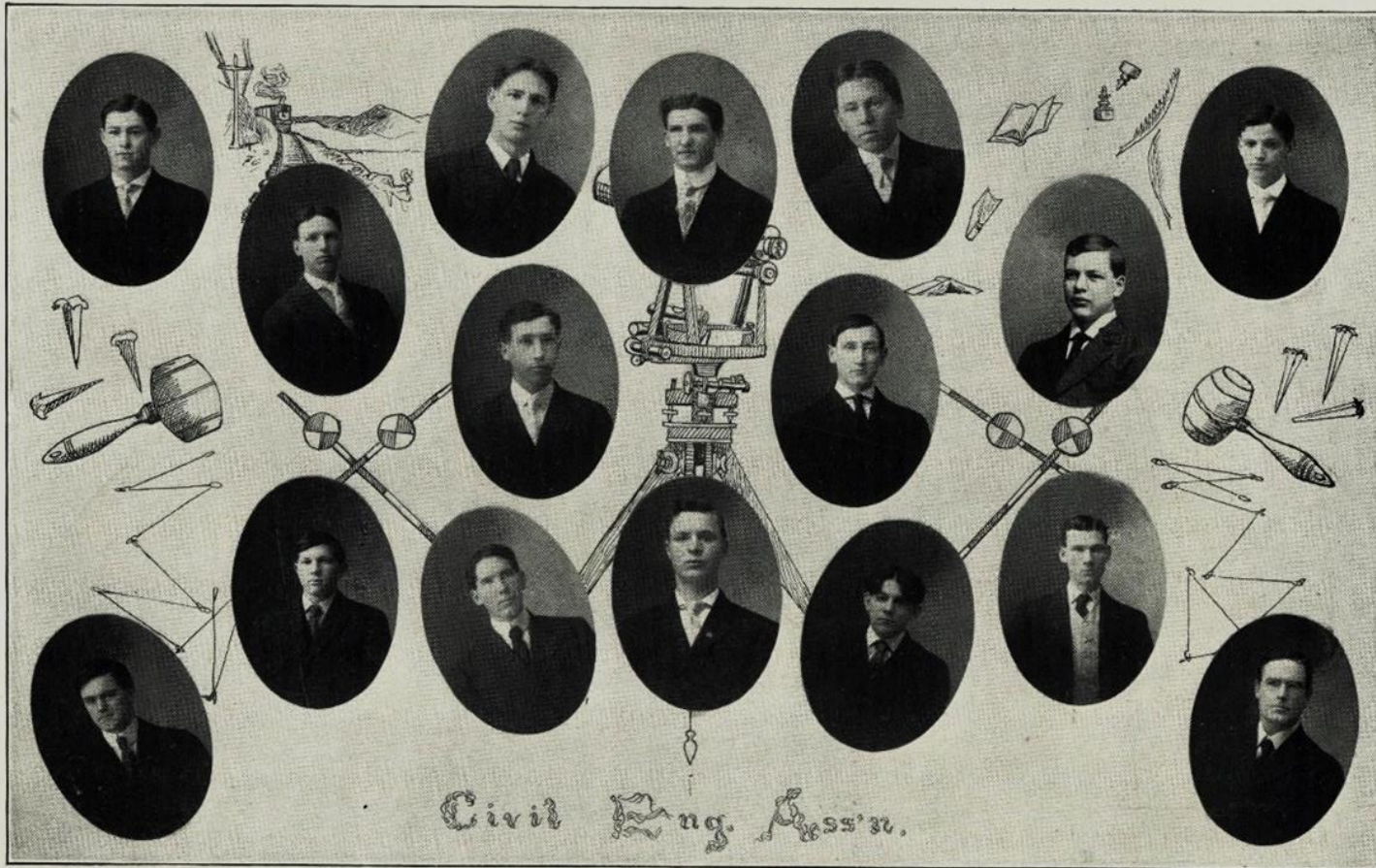
The association meets the second and fourth Fridays of every month throughout the school year. Aside from regular routine of business affairs, an interesting program is rendered at every meeting.

MEMBERS.

RALPH I. THOMPSON
JOHN C. STREBIN
H. C. CUNNINGHAM
WM. A. SELLWOOD
C. T. PARKER
FRED J. PORTER
ROY W. PRICE

P. A. LOCKWOOD
A. L. FINLAY
H. K. DONNELLY
W. A. HENSLEY
HOMER S. WALL
F. W. CONNELL
HOWARD O'CONNOR

ASCE



OAC CIVIL ENGINEERING ASSOCIATION 1909 MEMBERS

ASCE



Dexter Smith

OSU BS Civil
Engineering, 1914

Taught Civil/Structural Engineering At OSU
(1920's & 1950's)

Predicted the Failure of "Galloping Gertie"
At National Conference 6 Months Prior to
Collapse.

Designed 2nd "Tacoma Narrows Bridge"

Close Associate of Conde Mccullough





Raymond Archibald

KEN'S DAD

No. 3—RAYMOND ARCHIBALD
Kappa Delta Sigma
Civil Engineering Albany, Ore.
Sigma Tau (3), Treas. (4), Civil Engineering Association (2), Pres. (3), Forum (3), Pres. (4), Varsity "O" (3), Pres. (4), Varsity Football (3), Captain (4), Class Athletic Manager (4), Captain Co. "B."

JANUARY 31, 1918
OAC CE ASSOCIATION
MINUTES:
RAYMOND ARCHIBALD
ELECTED
PRESIDENT

OAC

No. 1—CHRISTINE ABBOTT
Delta Delta Delta
Home Economics Caldwell, Idaho
Barometer Staff (2, 3, 4), Varsity Basketball (3), Home Economics President (4), Waldo Prize (1, 2), Y. W. C. A. Secretary (2), 1919 Beaver Staff, Varsity Tennis (2), Forum.

No. 2—ALFRED AGOSTI
Sigma Chi
Mechanical Engineering Portland, A. S. M. E. Associated Engineers.

No. 3—RAYMOND ARCHIBALD
Kappa Delta Sigma
Civil Engineering Albany, Ore.
Sigma Tau (3), Treas. (4), Civil Engineering Association (2), Pres. (3), Forum (3), Pres. (4), Varsity "O" (3), Pres. (4), Varsity Football (3), Captain (4), Class Athletic Manager (4), Captain Co. "B."

No. 4—AMY ARMISTEAD
Home Economics Portland, Ore.
Waldo Hall Club (1, 2), Cauthorn Hall Club (4).

No. 5—RUNA BACON
Kappa Alpha Theta
Commerce La Grande, Ore.
Associate Editor 1919 Beaver, Madrigal Club (1, 2).

No. 6—MARJORIE BARRATT
Gamma Iota
Home Economics Portland, Ore.
Y. W. C. A. Home Economics Club.

No. 7—CHARLES BEATIE
Gamma Tau Beta
Chemical Engineering Oregon City
Miners Club (1), Yell Leader (2), Athletic Manager (3), Associated Engineers (1, 2, 3, 4), Mask and Dagger Club (2, 3, 4), Chem. Eng. Ass'n (4), Chem. Club (2, 3), Junior Vaudeville, Class Quartette (2, 3), Sophomore Vigilance Committee (2), Director Co-op Book Store (2), Class Football (2), Varsity Football (3, 4), Board of Officers (4), Sgt.-at-Arms Senior Class, Lieut. Adj. (2), Major (4), Varsity Yell Leader (4).

No. 8—RALPH BECK
Alpha Tau Omega
Agriculture Corvallis, Ore.
Alpha Zeta (3), Chancellor (4), Class Reporter (1), Mask and Dagger Play (2), Barometer Staff (3), Varsity Football (3).

1919

ASCE

RAYMOND ARCHIBALD

1933: Design lead for Coos Bay, Yaquina Bay Bridges with Conde McCullough

1935-1938: Assisted, replaced McCullough in design/construction of Pan American Highway bridges

1943-1945; 1949-1956: Chief of Bridge Division, Bureau of Public Roads, Wash., D.C.;

1948-1949: Project engineer in charge of design for 4-mile-long Chesapeake Bay Bridge

1960-1962: State Bridge Engineer, Alaska Division of Highways



WHAT WAS HAPPENING IN 1920
IN THE OAC CE ASSOCIATION
JUST BEFORE THE ASCE CHAPTER
WAS FORMED?



From Meeting Minutes:

“Several speeches given concerning attendance and lack of pep in the organization.”

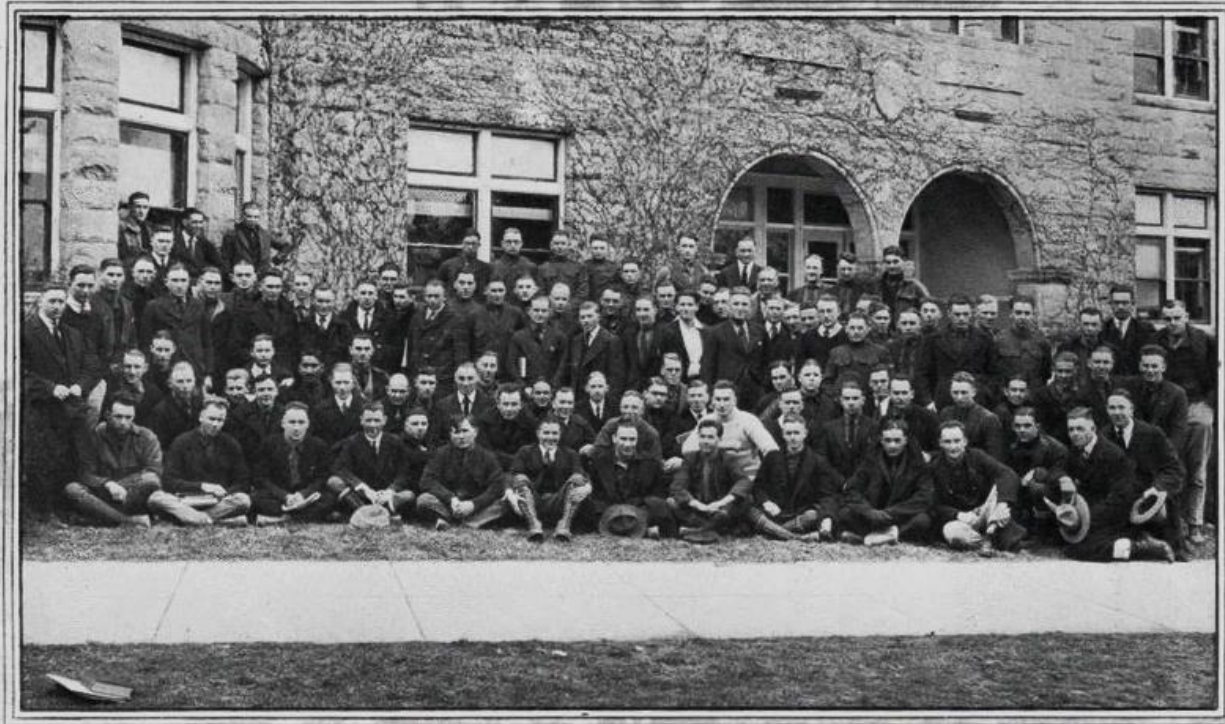
First OSU ASCE Chapter President Slater was elected Secretary-Treasurer.

“Professor Simms gives talk on character building and introduces new members of the faculty to the society.”



AMERICAN SOCIETY OF CIVIL ENGINEERS

CHAPTER
ESTABLISHED
1921



AMERICAN SOCIETY *of* CIVIL ENGINEERS

OFFICERS

| | |
|--------------------------|----------------------------|
| DICK SLATER | <i>President</i> |
| ALBERT WALTHER | <i>Vice-President</i> |
| WILBUR WELCH | <i>Secretary-Treasurer</i> |
| J. D. BELL | <i>Sergeant-at-Arms</i> |
| JOHN ALEXANDER | <i>Publicity Manager</i> |

For the past several years the students in Civil Engineering have been affiliated with the national organization, the American Society of Civil Engineers.

The objects of the society are the advancement of engineering training and public speaking.

ASCE

WHAT IN THE WORLD
WAS HAPPENING
IN 1921?



- A stamp costs 2 cents
- Chicago White Sox accused of throwing the World Series
- The final five San Francisco fire horses are retired
- Albert Einstein awarded the Nobel Prize for Physics
- “The Kid” silent film with Charlie Chaplin released
- Franklin D. Roosevelt diagnosed with polio
- Adolph Hitler elected leader of the Nazi party in Germany
- Emergency Quota Act limits immigration of Europeans
- Tulsa Race Massacre – 300 Black citizens killed, thousands injured
- Treaty of Berlin – ends WWI for the US



A. S. C. E.

A. S. C. E.

OFFICERS

| | |
|-----------------|-------------------------|
| SIDNEY KLAHN | <i>President</i> |
| BENJAMIN WRIGHT | <i>Vice-President</i> |
| TIM DE JONG | <i>Publicity Agent</i> |
| KENNETH PEEL | <i>Athletic Manager</i> |
| MARK NELSON | <i>Sergeant-at-Arms</i> |

A. S. M. E.

OFFICERS

| | |
|---------------------|-----------------------|
| COY BROWN | <i>President</i> |
| RUDOLPH WALLACE | <i>Vice-President</i> |
| ANTON SCHWERTZFEGER | <i>Secretary</i> |
| RUSSEL ROTH | <i>Treasurer</i> |

ASCE MEMBERS: 1930 BEAVER YEARBOOK

ASCE

AMERICAN SOCIETY OF CIVIL ENGINEERS
OREGON STATE COLLEGE STUDENT CHAPTER

Meeting No. 1
Apperson Hall 212

October 18, 1936
7:30 PM

Minutes

The meeting was called to order by President Charles Ruzek, who introduced the speaker of the evening, Mr. D. Donaldson, consulting engineer in charge of models of the Bonneville Dam. Mr. Donaldson talked on the various construction features of the dam and told of some of the major engineering problems solved in controlling the river. One of his large models was displayed giving a comprehensive picture of the works.

Free copies of "Civil Engineering" and pamphlets on the aims and purpose of the ASCE were passed out.

Meeting adjourned.

Respectfully submitted

Jimmie Howland
Jimmie Howland
Secy.

OSU ASCE Minutes from
Oct 18, 1936, with Jimmie
Howland (co-founder of
CH2M) as Secretary





AMERICAN SOCIETY OF CIVIL ENGINEERS

The local chapter of the American Society of Civil Engineers promotes a professional spirit among student members. It also sponsors a loan fund for worthy seniors in civil engineering, holds regular meetings for which outstanding speakers are secured, and sponsors several field trips each year. Jerry Cavanaugh was president of the society for the past year.

ASCE MEMBERS: 1940 BEAVER YEARBOOK

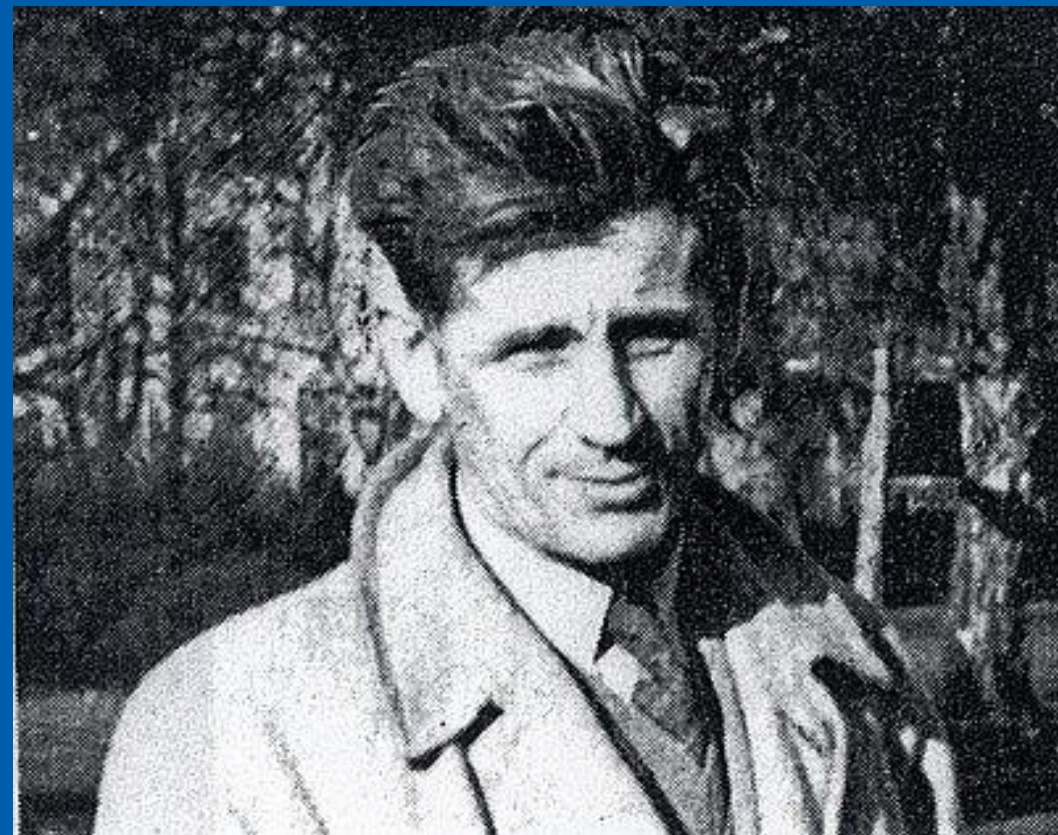




Holly Cornell



Burke Hayes,
Jim Howland



Fred Merryfield

CH2M founded, 1946





1949 – JEAN RICHARDSON FIRST WOMAN OSU CE GRADUATE

- Was told by some of her classmates that no one would hire a woman as a civil engineer.
- Worked for a month with no pay in her first job to prove she was capable.
- Designed Portland, OR water treatment plant in addition to a number of other significant projects.
- Strong advocate of math and science education through the MathCounts program.





1940-1949

ASCE



Front row: W. Rucker, C. Sergeant, C. Keeney, O. Conyers, S. Riffel, D. Hoslem, W. Rice, J. Sanders, P. Keasey, R. Potter, C. Califf, S. Sinnes, R. Conklin, E. Schamp, E. Harrington, G. Griffin.
 Second row: A. Chiu, L. Phinney, C. Smith, R. Henny, K. Orille, J. Cliva, D. Hoggatt, E. Watkins, D. Koester, R. Young, J. Noble, D. Davis, J. Laurila, E. Harden, D. Genz, E. Geer, L. Crane.
 Third row: S. Brown, G. Jacobs, K. Ngan, D. Weiss, S. Andrus, J. Holm, H. Dodge, M. Mamari, J. Bradfield, I. Huddleston, H. Holbeck, J. Brooks, W. Watters, L. Inman, J. Midkiff, A. Soule, O. Carstensen, E. Breedlove, I. Larsen, R. Kjelmmyr, R. Soden, J. Patterson, A. Lundbeid.
 Fourth row: D. Haucen, W. Mueller, C. Johnson, B. French, D. Halligan, R. Werdlandt, R. Lytle, R. Blakley.
 Fifth row: R. Meyer, M. Ring, O. Domreis, H. Tunks, M. Loomis, D. Lent, R. Wilson, E. Schaudt, T. Dewhurst, L. McCloskey, W. Rogers, D. Smith, D. Hasle, E. Herrie, R. Johnston.
 Back row: A. Balch, K. Kohler, G. Mathison, L. Tallett.

AMERICAN SOCIETY OF CIVIL ENGINEERS

Field trips to sites of engineering developments and government agencies, a joint meeting in Portland with the Oregon chapter, the Engineers ball, and a winter term bust were the main activities of the American Society of Civil Engineers this year. The ASCE co-sponsored a conference attended by engineers from all over the state.

ASCE MEMBERS: 1950 BEAVER YEARBOOK

1950-1959



ASCE

1950-1959

O. S. C. CIVIL ENGINEERING STUDENTS PICTURED ON RECENT T. S. TRIP



Nearly 50 civil engi-
Oregon State
instruct
the



ASCE

1950-1959



INTERNATIONAL AIRPORT & UNITED AIR LINES



Seniors crossing the feeder canal of Grand Coulee Dam during the week-long Senior field trip.

ASCE

AMERICAN SOCIETY OF CIVIL ENGINEERS



American Society of Civil Engineers is open to all civil engineering students. They hold monthly meetings featuring speakers who acquaint students with practices of professional civil engineering. The club sponsors an annual banquet and picnic.



ASCE MEMBERS: 1960 BEAVER YEARBOOK

ASCE

1960-1969



ASCE ANNUAL BANQUET- Installation of new officers. Left to right incoming President Sheridan Atkinson, Mrs. Ted Way, outgoing President Ted Way, Prof. Hal Pritchett, faculty advisor, and guest speaker Dr. Paul Jensen.



ASCE ANNUAL BANQUET- Left to right Mrs. Fred Burgess, Prof. Fred Burgess, Department Head and Mr. and Mrs. Sheridan Atkinson.

ASCE

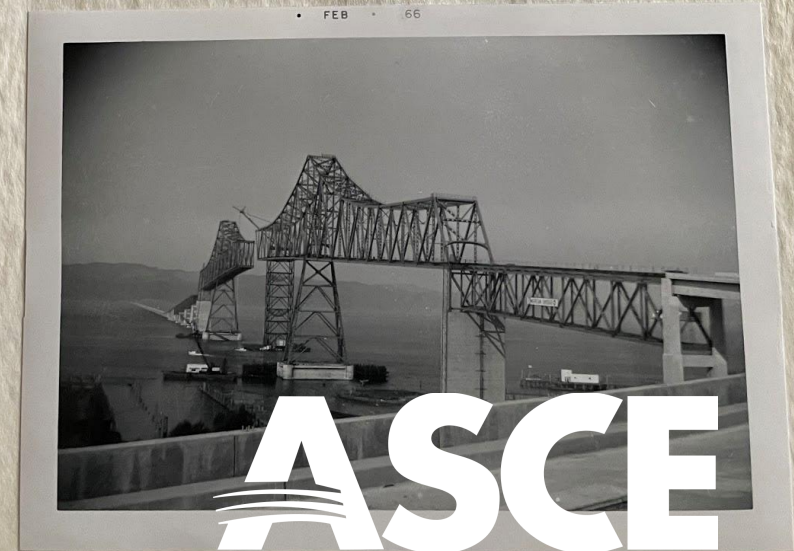
1960-1969



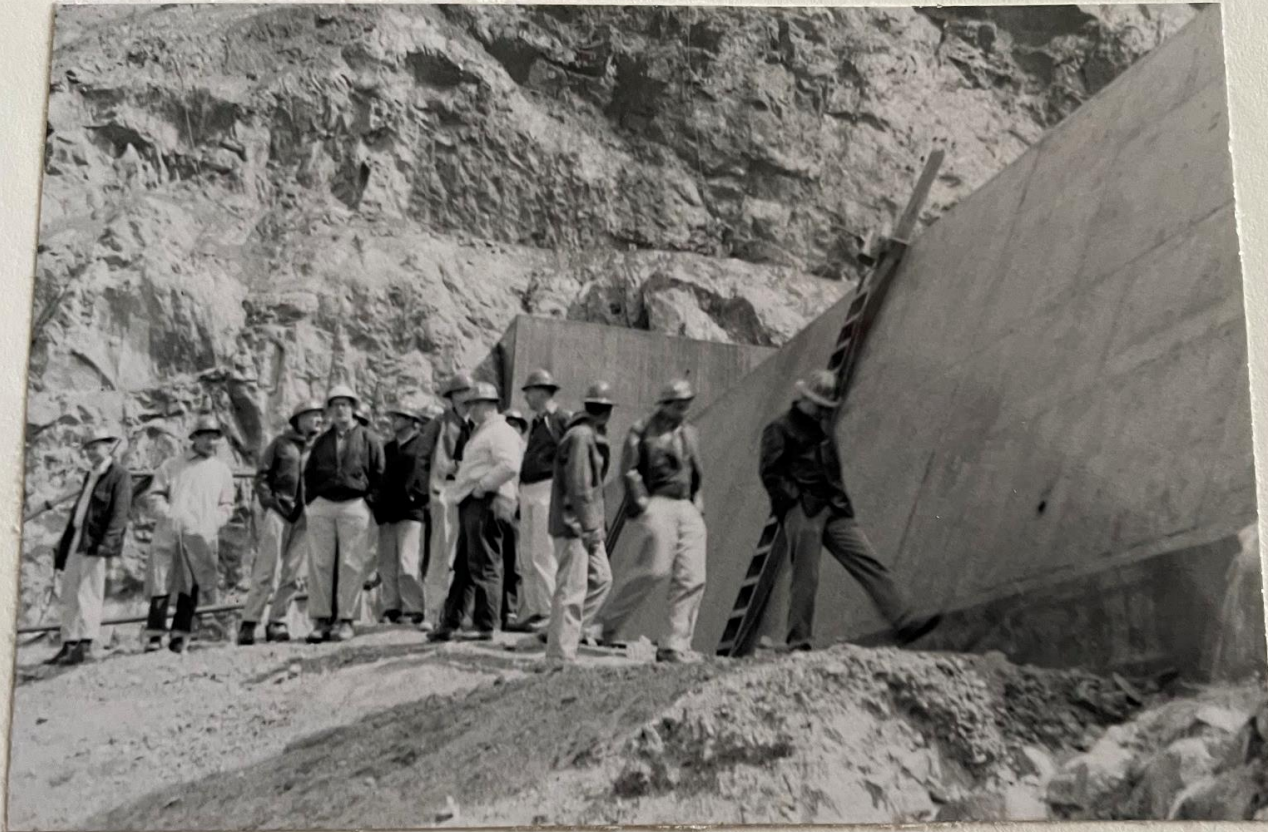
From left to right: Prof. Glenn Holcomb, Dept. Head; Arlen Rippe, Rec. Secty.; Paul Troman, Corresp. Secty.; Rolland Baxter, Treasurer; Prof. Robert Schultz, Student Chapter Adviser; Edward McGinty, Vice President; Earl Gjeldre, President.



Students viewing the main span.



A view of the bridge from the entrance ramp on the Oregon side.



Chapter members inspect the spillway
flip bucket.

1960-1969

ASCE



AMERICAN SOCIETY OF CIVIL ENGINEERS

This organization helps prepare its members for their professional roles as civil engineers. Field trips and discussions during their meetings aid them in their goal.

SOCIETY OF MANUFACTURING ENGINEERS

This club is designed for men that are interested in manufacturing engineering as a profession. Guest speakers are provided, and members attend tours through northwest plants.

ASCE MEMBERS: 1970 BEAVER YEARBOOK

ASCE

□ Student chapter of the American Society of Civil Engineers . . . service project: playground design for handicapped individuals . . . annual picnic and concrete canoe race . . . "Men's minds affecting man's environment" . . . "You're actually a person to your prof, not just a student."

R1, L-R: Darren Kipper, Henry Young, Scott Christensen, Fahhad Abdulkareem, John LaVerdure, Eddie Tang, Tom Milne, Jack Carlson. R2: Rex Wong, Camille Abou Fadde, Gregg Marioni, Bill Gould, Rick Wessell. R3: Douglas Ferrarelli, George Darr, Ron Bush, Marilyn Reed, Stan Watters, Doug Raitt. R4: Wrandall Breves-Morua, John Valdes, Vong Toan, Kathy Bucy. R5: Gerald Friesen, Tim

Amstutz, Russ Lamb, Richard Kripaehne, Tony Allen, Jim Kaufman. R6: Stan Firestone, John Houle, Nea Buisman, Bill Lally. R7: Mark Hirota, Dan Collins, Carl Bassler, Jay Boudwin, Randy Nash, Brian Schmidtke, Corbey Boatwright, Mike Robbins, Randy Lunsford, Jim Cox, Sue Heeszel, Sid Hillier, Janet Hearn, Betty Daggett, Kevin Harold, Dale Gehring, Sid Wicks.



ASCE MEMBERS: 1980 BEAVER YEARBOOK

ASCE

1980-1989



ASCE

1980-1989



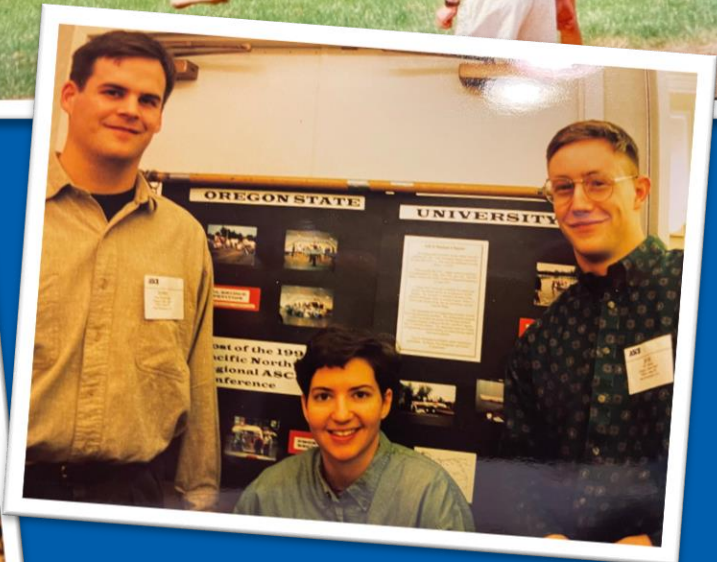
ASCE

1990-1999



ASCE

1990-1999



ASCE

1990-1999

“I LEARNED MORE IN THAT FEW SECONDS WHEN THE BRIDGE FAILED THAN I LEARNED IN ALL OF DR. MILLER’S CLASSES” – KARL BIRKY



OSU’s FIRST
STEEL BRIDGE
AT ST. MARTIN’S
UNIVERSITY
1992



ASCE



OSU'S STEEL BRIDGE TEAM SUCCESS – MANY TRIPS TO THE NATIONAL COMPETITIONS

1994: UNIVERSITY OF CALIFORNIA – SAN DIEGO – 4th PLACE!

1995: HOSTED REGIONALS; NATIONALS AT UNIV. OF FLORIDA

1996: STATE UNIVERSITY OF NEW YORK AT BUFFALO

1999: UNIVERSITY OF ALASKA – ANCHORAGE

2000: TEXAS A&M UNIVERSITY – 3RD PLACE!

2001: CLEMSON UNIVERSITY

2013: HOSTED REGIONALS AT OSU

2014: UNIVERSITY OF AKRON

2015: UNIVERSITY OF MISSOURI – KANSAS CITY

2016: BRIGHAM YOUNG UNIVERSITY

2017: HOSTED NATIONALS AT OSU

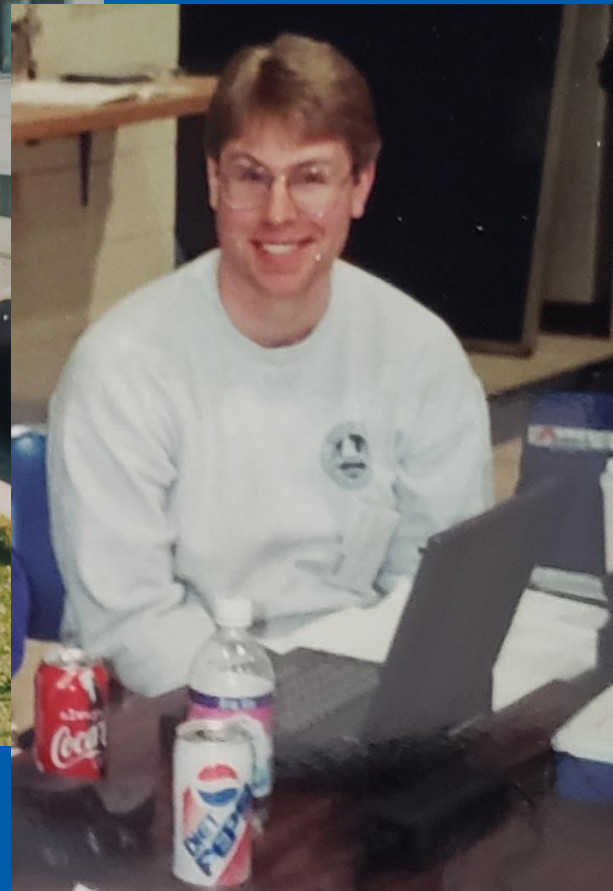


1990-1999



ASCE

1990-1999



ASCE

1990-1999



ASCE

1990-1999

1996 – MARYS RIVER BRIDGE



THE DAILY Barometer
A Student Publication
OREGON STATE UNIVERSITY, CORVALLIS, OREGON
WEDNESDAY MAY 8, 1996 XLVIII No. 133

Engineering students build bridge in Mary's River Park

By JAMES DONNELLY
of the Daily Barometer

A foot bridge designed and built by OSU students will be installed in Philomath's Mary's River Park in June.

The project, which has been funded through donations by local businesses, is the work of student members of the OSU American Society of Civil Engineers.

"In a way it's a bridge between many things, not only in the physical sense. It goes between the academic work and real world," said Caroline Brichux, senior at OSU in civil engineering, who is in charge of design for the project. "You know you're going to have problems between the idea and the reality of putting it together. I wanted to have a nice lattice on the railing but if you look at the reality of the situation you have to account for vandals, so we have chain link."

The 30-foot arch will span a drainage ditch and serve as a concourse between the park and a recreation area to be developed at a later date.

The 800-pound structure was designed by students to withstand flooding, clay soils and even the occasional case of human stupidity. "Our worst case scenario was that of someone riding a bucking horse across the bridge. We designed it so that any beam could support the entire weight of the horse. You could probably drive a bulldozer across it before it failed completely," Brichux explained.

"When you work on a project for this long you want it to have significance. That's why we decided to dedicate it to the Clemens," Brichux said.

Rex and Ethel Clemens established the Clemens Foundation which provides educational grants for students from Philomath, Alsea, Eddyville and Harney Counties. Both the Clemens have passed away in recent years. Brichux said the Civil Engineering Club were glad to honor the couple who have contributed to the education of so many OSU students.

The bridge was originally intended to open this month, but because of financial concerns, the completion date has been pushed ahead. Paul Amato, who is in charge of public relations for the project, explained that businesses and individuals in the area have been helpful in donating materials and money to the project. "The people have been just wonderful," he said.

Both Amato and Brichux said that the project "was an important learning experience for everyone who participated in the program. 'We really wanted to get the juniors (in civil engineering) involved,' noted Brichux. 'We made sure that everyone could contribute on one level or another.'"

"This is an excellent opportunity for students to gain experience," Amato said. "This is a project which entails every aspect of civil engineering. We went from testing the soils in the area to foundation design to engineering the construction and included aesthetic concerns on top of all that. It was a great learning experience."

Dan Herford and Jeff Bernardo work preparing the laminated beams that will span the Mary's River in Philomath. John Mayor (in back), as well as other engineering students have been part of the year long project.



ASCE

2000-2009



WHERE'S
Darren
~~WALDO?~~



2000-2009



2000-2009



Stacy Frost, Oregon YMF President; Katie Walker, OSU President, and Kurt Krueger, Oregon Section President after playing a round of golf.



OSU ASCE Members competing in the Steel Bridge Competition.



Katie Walker, OSU ASCE President, competing in the Technical Paper Presentation (Placing 1st).



OSU ASCE member competing in the Concrete Bowling Ball Competition.



OSU ASCE members competing in the Surveying Competition (placing 2nd).



OSU ASCE Members competing in the Canoeing Competition

2000-2009



22 OSU students and 2 advisors spent the weekend at PSU competing against schools from throughout the Pacific Northwest region.

The steel bridge team did a good job of making improvements to the bridge since fabricating and testing at LBCC, and unfortunately came up a bit short of carrying the 2500 lbs without deflecting more than two inches. The team showed a lot of patience and character throughout the contest and great sportsmanship.

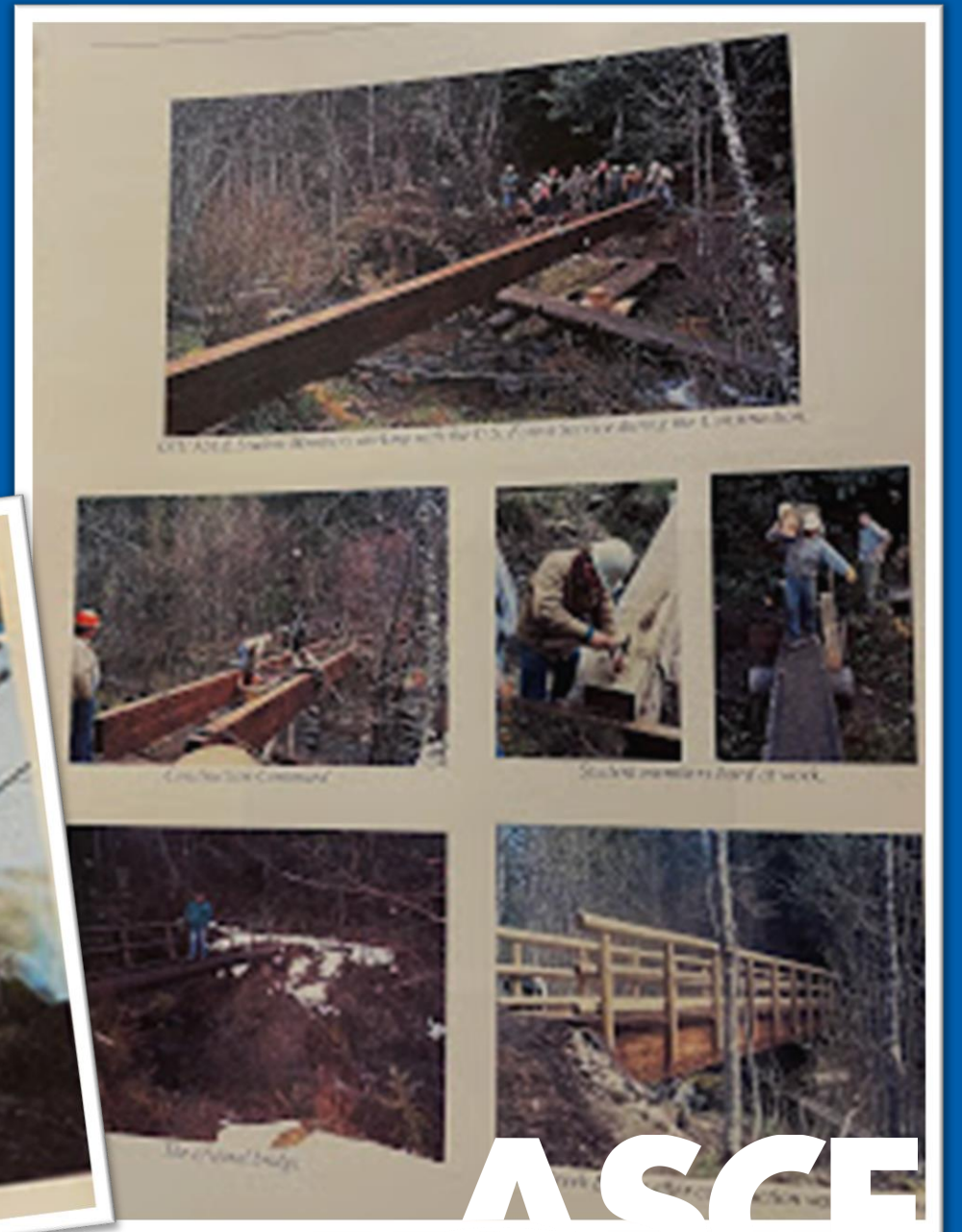


The canoe team placed 7th overall, 5th in final product and just got better and better in the races. Really did a good job working together as a team!

ASCE

2000-2009

SNOW CREEK EQUESTRIAN BRIDGE BUILT IN
2003, THEN COLLAPSED IN
VERY HEAVY SNOW IN 2008



ASCE

2000-2009

WILLAMETTE PARK PEDESTRIAN BRIDGE
COMPETED IN 2004 AFTER SEVERAL
YEARS OF WORK



ASCE

2000-2009

SOMETIMES YOU CAN LEARN FROM
AND EVEN ENJOY YOUR FAILURES!



2000-2009



ASCE

2000-2009



ASCE

2000-2009



ANNUAL OFFICER'S RETREAT –
PACIFIC CITY



DA VINCI
DAYS
ASCE

2010-2019



ASCE

2010-2019

TIMBER BRIDGE CONTEST



ASCE

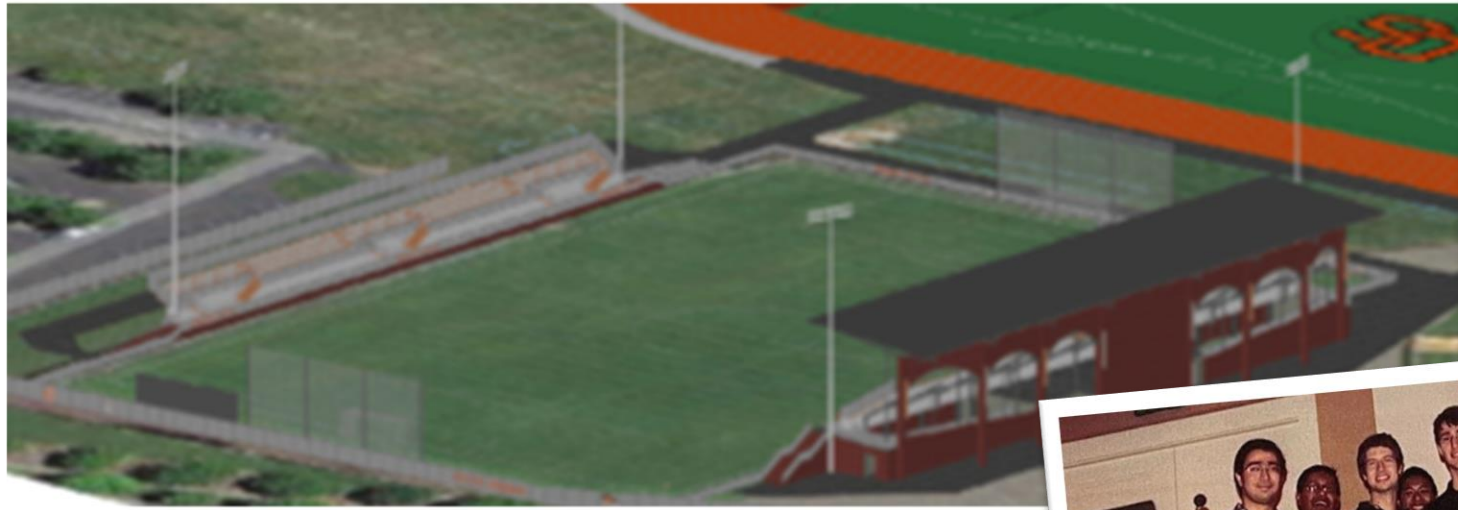
2010-2019



HOSTED PNW
STUDENT
CONFERENCE

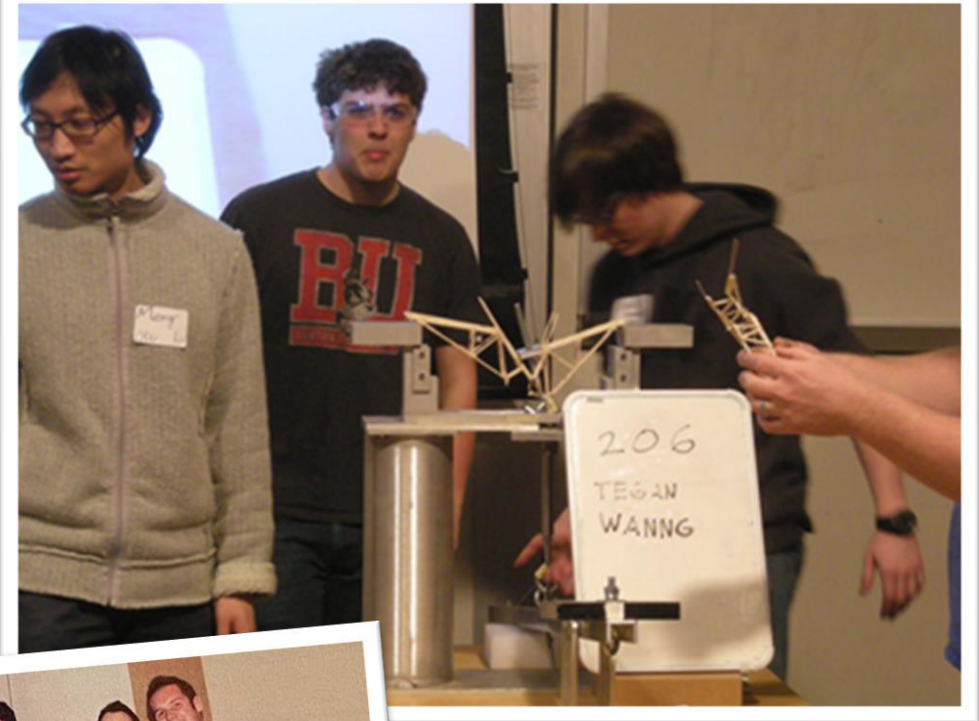
ASCE

2010-2019



OSU SOCCER
STADIUM DESIGN

2011 OSU'S SECOND
1ST PLACE FINISH IN
EERI INTERNATIONAL
SEISMIC COMPETITION



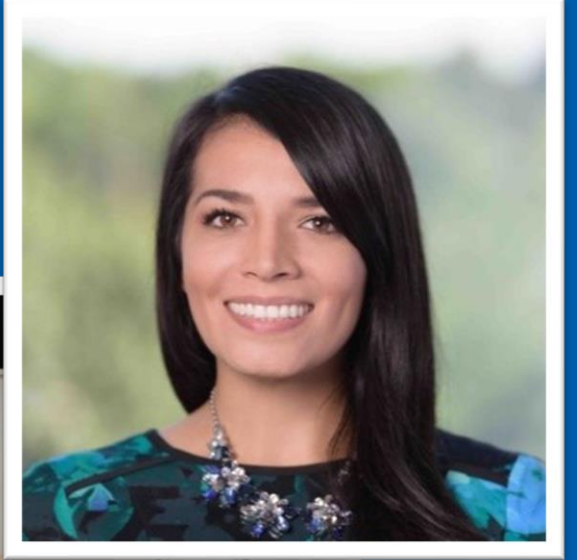
HIGH SCHOOL BRIDGE
CONTEST



ASCE

2010-2019

MONICA MORALES,
2012 CO-CAPTAIN,
2022 NATIONAL HEAD JUDGE



2012 CONCRETE CANOE NATIONALS
AT UNIVERSITY OF NEVADA - RENO



ASCE

2010-2019



WATER SANITATION SYSTEM AND ROOF – JAQUILILLO NICARAGUA 2013



2010-2019



ASCE

2010-2019

DESIGN-BUILD RAINWATER CATCHMENT – AGUA FOR
NICARAGUA – LITTLE CORN ISLANDS 2014



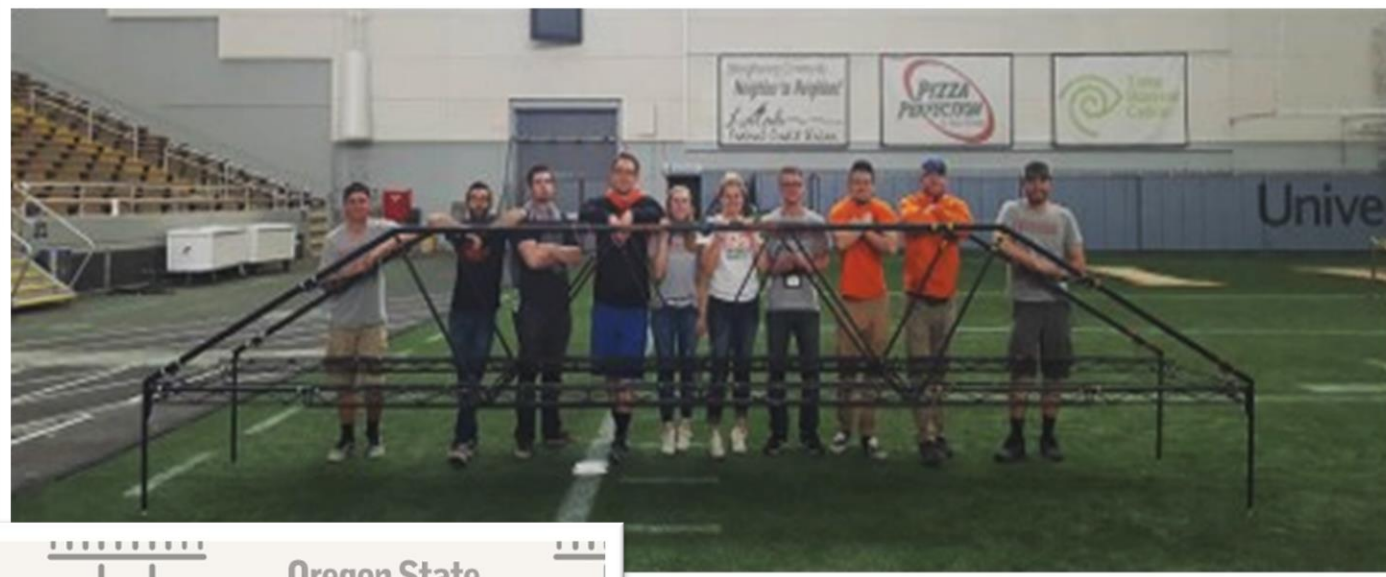
ASCE

2010-2019



ASCE

2010-2019



2017 National Student Steel Bridge Competition

Oregon State University •
Corvallis, Oregon
May 26-27, 2017



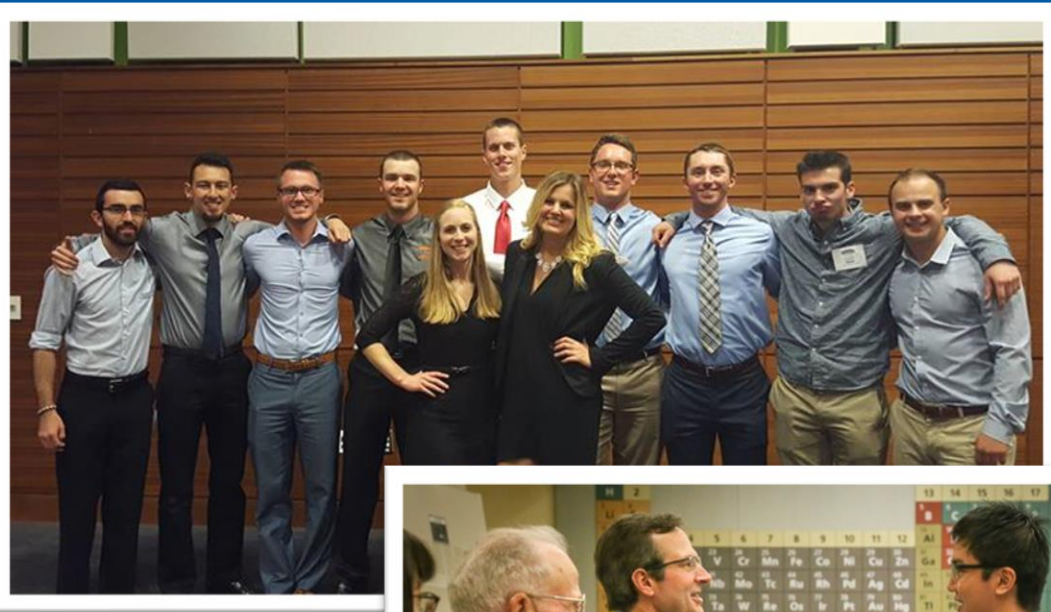
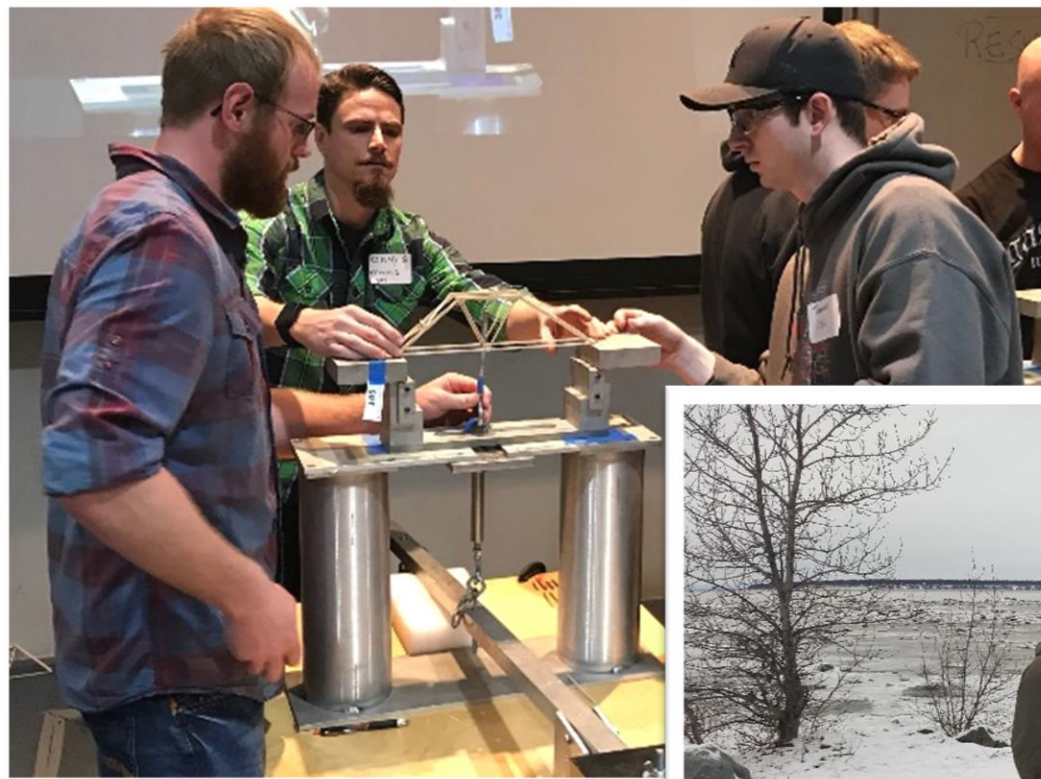
- Home
- Registration
- Schedule
- Accommodations
- Travel
- Maps & Parking



HOSTED 2017
NATIONAL STUDENT
STEEL BRIDGE
COMPETITION

ASCE

2010-2019



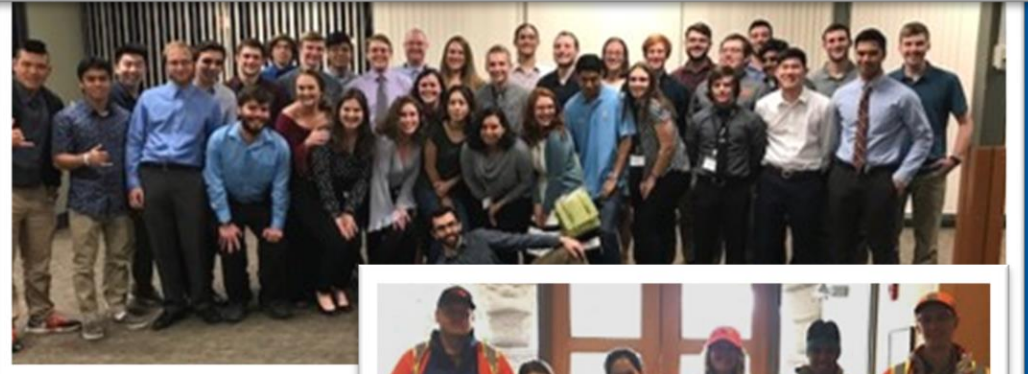
ASCE

2010-2019



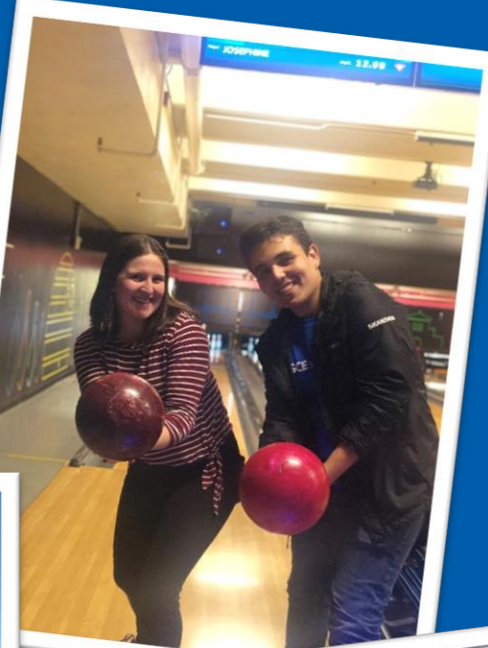
ASCE

2010-2019



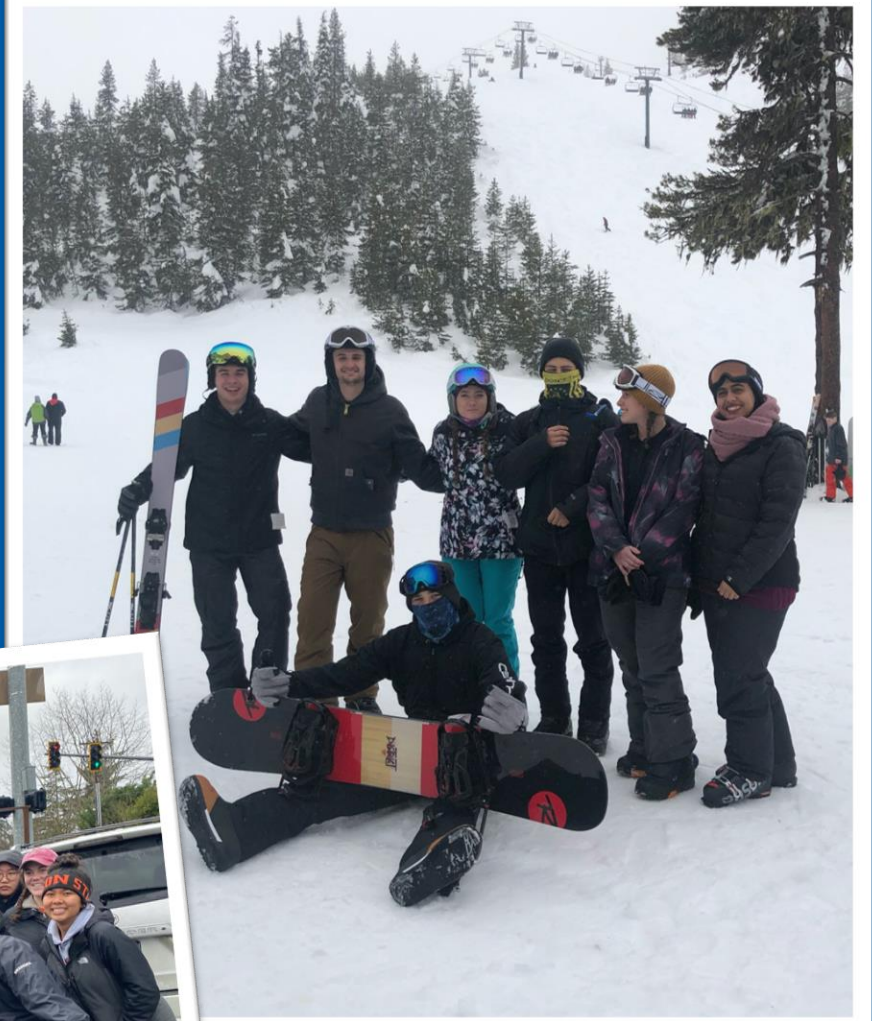
ASCE

2020-2022



ASCE

2020-2022



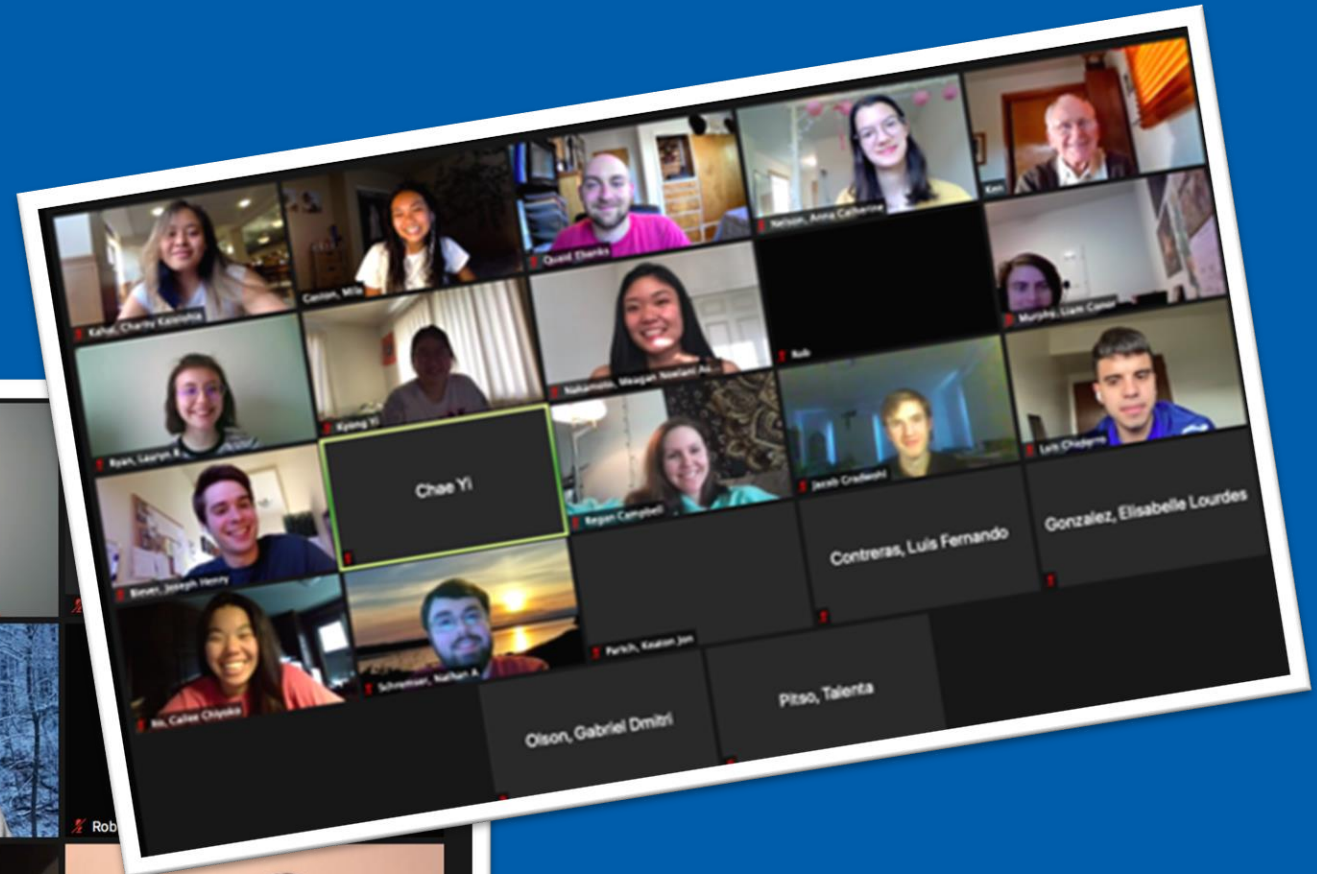
ASCE

2020-2022



ASCE

2020-2022



ASCE

2020-2022



ASCE



NATIONAL ASCE

“NEW FACES OF CIVIL ENGINEERING”

PROFESSIONALS



STUDENT

2008



JAVIER MONCADA

ALSO, HEAD JUDGE, NATIONAL
STUDENT STEEL BRIDGE
COMPETITION, 2023

2019



MONICA MORALES

ALSO, HEAD JUDGE, NATIONAL CONCRETE
CANOE COMPETITION, 2022
MEAD PAPER FOR YOUNGER MEMBERS, 2019

2022



JACOB ATKINS

OSU CIVIL ENGINEERING,
UNDERGRADUATE STUDENT,
2022



**NATIONAL ASCE RECOGNITION
OF OSU STUDENTS**

ASCE

STUDENT LEADERSHIP AWARD

STUDENT AMBASSADOR



ANDY TRUONG

2015



MADISON HALL

2020



ERICK MORENO

2019-2021



**RECENT SOCIETY-LEVEL
AWARDS**

OSU ALUMNI/FACULTY

| | |
|----------------------|---|
| 2019 - Erica Fischer | Collingwood Prize |
| 2018 - Rob Madsen | Norman Medal |
| 2017 - Greg DiLoreto | William H. Wisely American Civil Engineer Award |
| 2017 - Jeff Bradley | Arid Lands Hydraulic Engineering Award |



 **ASCE**

FELLOWS

OSU ALUMNI/FACULTY

Scott Ashford

J.R. Bell

Rob Bertini

Shane Brown

Greg DiLoreto, President Emeritus

John Gambatese

Tom Miller

Marvin Pyles

Arlan Rippe

Lee Schroeder

Bob Schultz

Frank Sherkow

Fred Wright

Solomon Yim





OREGON SECTION

ENGINEER OF THE YEAR

OSU ALUMNI/FACULTY

| | | | |
|------|--------------------|------|------------------|
| 2021 | Darren Hippenstiel | 1996 | Philip Smith |
| 2020 | Jason Kelly | 1995 | Greg DiLoreto |
| 2019 | Mikal Mitchell | 1994 | Pete Klingeman |
| 2018 | Allison Pynch | 1993 | Arlan Rippe |
| 2016 | Gene Tupper | 1992 | Gary Parks |
| 2010 | Jeff Bradley | 1991 | Robert M. Bonney |
| 2005 | Wayne Huber | 1989 | Hal Pritchett |
| 2003 | Stan Kelsay | 1987 | Lee Schroeder |
| 2001 | Ken Archibald | 1986 | Gordon Beecroft |
| 1999 | Bill Jabs | 1980 | Holly A. Cornell |
| 1998 | Bob Schultz | | |





OREGON SECTION

**GOVERNMENT ENGINEER
OF THE YEAR**

OSU ALUMNI/FACULTY

| | |
|------|---------------|
| 2019 | Leon Kempner |
| 2016 | Ken Archibald |
| 2014 | Tom Szymoniak |
| 2012 | Dave Rogge |
| 2011 | Doug Tindall |
| 2010 | Tom Miller |
| 2004 | Greg DiLoreto |
| 2002 | Ken Roley |
| 1995 | Gary Parks |





OREGON SECTION

**YOUNG ENGINEER
OF THE YEAR**

OSU ALUMNI/FACULTY

| | | | |
|------|------------------------|------|--------------------|
| 2019 | Josh Goodall | 2007 | Darren Hippenstiel |
| 2018 | Chris Knight | 2006 | Stacy Frost |
| 2014 | Allison Pynch | 2001 | Kurt Krueger |
| 2011 | Scott Schlechter | 1985 | Greg DiLoreto |
| 2009 | Melissa Robelo Moncada | 1984 | Dave Nicoli |
| 2008 | Javier Moncada | 1983 | Jory Abrams |





OREGON SECTION

**YOUNG GOVERNMENT ENGINEER
OF THE YEAR**

OSU ALUMNI/FACULTY

| | |
|------|------------------|
| 2015 | Evan Kristof |
| 2008 | Kurt Krueger |
| 2003 | Kristie Hartfeil |





**OSU ASCE STUDENT CHAPTER
TEACHER OF THE YEAR**

JIM LUNDY, 2000
STEVE DICKENSON, 2000
CHRIS HIGGINS, 2001
BOB SCHULTZ, 2002
JIM LUNDY, 2003
CHRIS HIGGINS, 2004
TOM MILLER, 2005-2007
CHRIS HIGGINS, 2008

JACK ISTOK, 2009,2010
TRACY ARRAS, 2011
KENNY MARTIN, 2012,2013
SHANE BROWN, 2014
TOM MILLER, 2015-2019
ERICA FISCHER, 2020
TOM MILLER, 2021



HISTORY OF
NATIONAL ASCE
RECOGNITION:
OSU STUDENT CHAPTER'S
OUTSTANDING PERFORMANCE



Distinguished Chapter Award for Region 8

(AK, AZ, HI, ID, MT, OR, UT, WA, Western Canada) in 2014, 2021, 2022.

Richard J. Scranton Community Service Award as top chapter nationally in **community service** (2014, finalist 2015); Outstanding Community Service Award (1996); Service Certificates of Commendation (2004, 2008); Service Award (2010); Letter of Recognition for Community Service (2018)

Certificates of Commendation (1972, 1978, 1979, 1987, 1992-1998, 2002-2006, 2008, 2011, 2013, 2015, 2018, 2020, 2022)

Letters of Honorable Mention (1999-2001, 2007, 2009, 2010, 2012, 2016, 2017, 2019)



VIDEO MEMORIES



RAWAN AL NAABI

SEI Chair

INSERT VIDEO

ENGINEERS IN ACTION

SOPHIA SPISAK

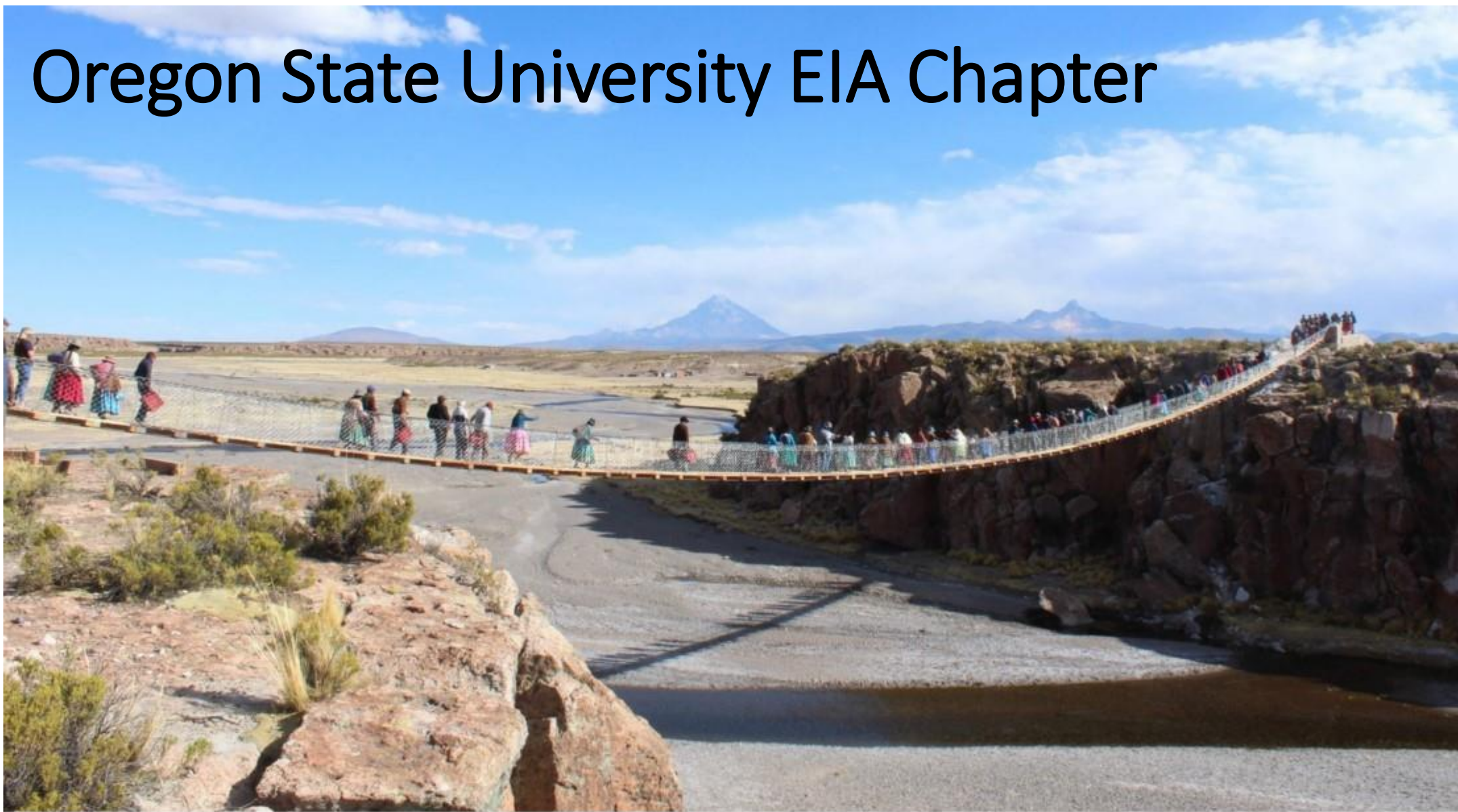
ASCE COMMUNITY SERVICE CHAIR

GLENN WALSH

TRAYLOR BROS.



Oregon State University EIA Chapter



ENGINEERS IN ACTION

EIA Mission



Why Footbridges

The World Bank estimates that **one billion** people in low-income countries around the world lack access to a road that is passable year-round, largely due to rivers that become impassable during rainy seasons. When rivers swell, walks to school or work or visits to a doctor can become life threatening without a bridge to cross. For people around the world, a bridge can mean the difference between receiving an education, providing for their family, and getting medical attention - or not.

EIA Mission



35+ university chapters



12 countries



99 bridges



150,000+ people impacted

EIA Student Chapters around the World



Starting 2022-23



OSU EIA Student Chapter



- OSU EIA will be a subpart of the OSU ASCE Student Chapter
- 2022-2023 School Year: Support design of bridge by working with another EIA student chapter as a tag-along.
- September 16-18, 2022: EIA Bridge Conference with 2-3 OSU Students attending.
- 2023 Summer: OSU Students travel to their first bridge build as a university tag-along partner.
- Fall 2023 and Beyond: Continue to build the EIA Chapter and have OSU do a solo bridge build.

OSU EIA Student Chapter



- Fundraising Target Goals (Estimated)
 - Fall 2022 - EIA Bridge Conference: \$1,500 plus Travel for each of 2-3 Students
 - Summer 2023 – OSU Tag-Along: \$7,500 plus Travel for each of 2-3 Students
 - Fall 2023 - EIA Bridge Conference: \$1,500 plus Travel for each of 2-3 Students
 - Summer 2024 - OSU Solo Bridge Build: \$25,000 plus Travel for each of 8-10 Students

EIA Bolivia Bridge Program – Palca



OSU EIA Student Chapter



MerBear Memorial Bridge
Huaraca, Bolivia 2021
Industry Partner: 



- How To Contribute:
 - Directly to OSU ASCE Chapter through OSU Foundation (Note EIA Chapter) (Recommended)
 - Directly to EIA (Note Oregon State University Chapter)
 - Pledge Cards to Indicate your Interest/Commitment

OSU EIA Student Chapter



12% increase in children enrolled in school



18% increase in healthcare treatment



56% increase in crop yield



75% increase in farm profits



30% increase in labor market income



59% increase of women in the labor market

CURRENT ASCE NATIONAL PRESIDENT



Dennis Truax



SPECIAL PRESENTATION



DENNIS TRUAX

ASCE NATIONAL PRESIDENT

DARREN HIPPENSTIEL

ASCE REGION 8 GOVERNOR



CLOSING REMARKS



ROB BERTINI

OSU CCE SCHOOL HEAD

THANK YOU FOR CELEBRATING

100 YEARS

OF ASCE AT OSU!



OSU ASCE
STUDENT CHAPTER
100-YEAR
ANNIVERSARY
CELEBRATION

